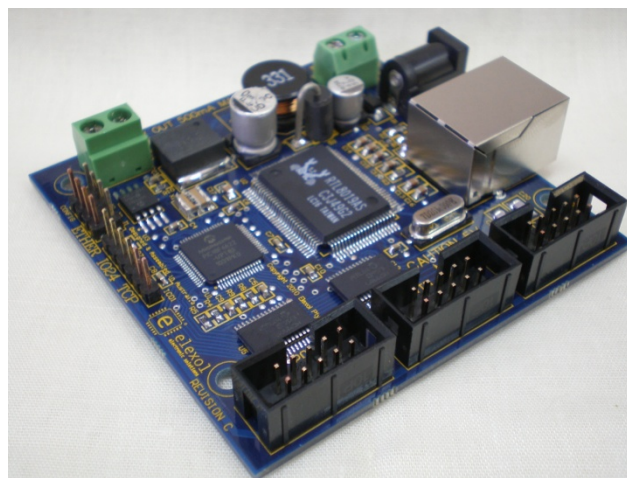


ETHER I024 TCP

The Ether I024 TCP (Originally named the Ether I024 PIC R) is an integrated, micro-controller based network interface board with 24 digital user I/O lines. The module's firmware and hardware enable your devices or other modules to be connected to a generic Ethernet network and controlled using commands sent over the network via either TCP or UDP.

Each of the 24 User I/O lines operates at 5V DC maximum levels and can be independently programmed as an Input whose state can be remotely sensed via another network device, an Input whose state is internally checked and transmitted when a change occurs, or an Output whose state can be remotely controlled by another networked device.



Module Features

- On-board Web Interface to configure and control the board
- Supports TCP and UDP Commands, ARP, BOOTP, DHCP, ICMP, HTTP
- 24 independently programmable signal lines with programmable pull-ups per line
- 3 independently controlled SPI and I2C Communication Ports
- Advanced configuration allows the modules to automatically scan the input ports and transmit changes directly to another ETHER I/O 24 module without host connection or to any Internet Port by router connection
- On board EEPROM allows all ports to power up in a user programmable state
- Programmable Fixed IP or Dynamic IP assignment from a DHCP server
- Can be connected to a wireless network gateway or access point for wireless operation
- Easy connection to the IO port via a 10-way box header that suits a standard IDC connector.
- 72mm Standard width for DIN Rail Modules

For more information please visit our website - www.elexol.com